

Inside a plant cell

Student A - Ask your partner questions to fill your gaps - **student A starts**

This is (1). This is a jelly containing hundreds of chemicals.

The nucleus controls what the cell does and how it develops.

A cell (2) controls what goes in and out of the cell.

The cell's food is turned into energy by the **mitochondria**.

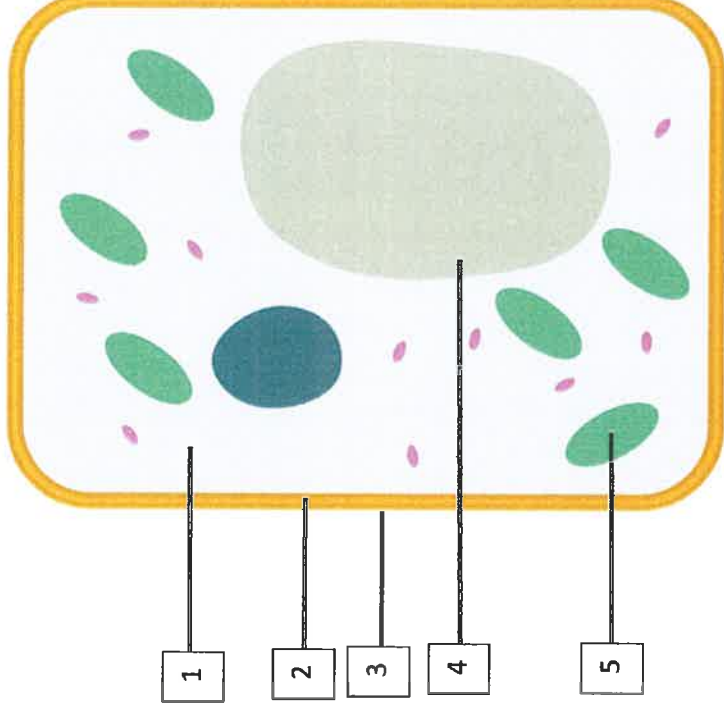
Around the cell is a cell wall made of (3).

This is a **vacuole**. All plants have these. The liquid inside them is called

cell (4). The green cell parts are **chloroplasts**. They are

tiny discs full of a green substance called (5). They trap the

light energy that plants need for making food in a process called **photosynthesis**.



1. Can you tell me what is

2. Please tell me what

3. Do you know what

4. Do you know what

5. Please tell me what is

Inside a plant cell

Student B - Ask your partner questions to fill your gaps - **student A** starts

This is **cytoplasm**. This is a jelly containing hundreds of chemicals.

The (1) controls what the cell does and how it develops.

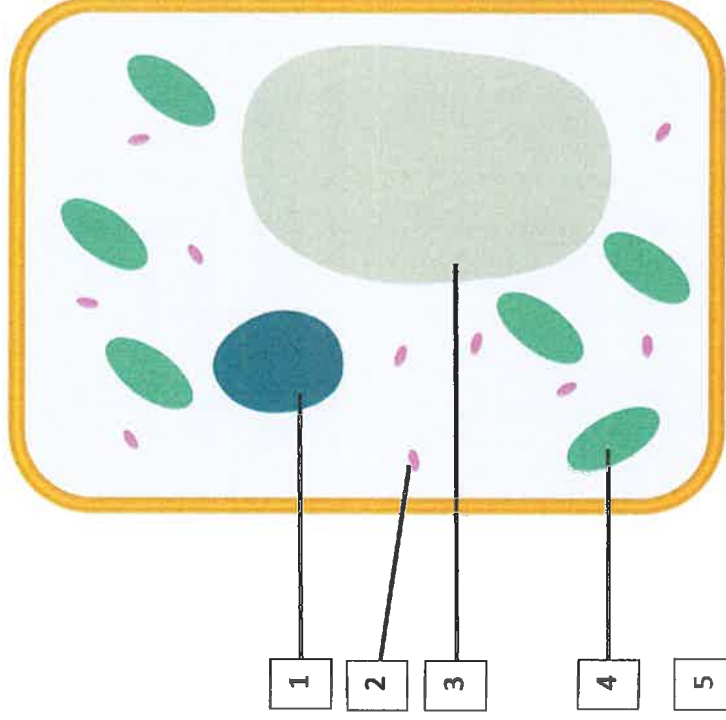
A **cell membrane** controls what goes in and out of the cell.

The cell's food is turned into energy by the (2).

Around the cell is a cell wall made of **cellulose**.

This is a (3). All plants have these. The liquid inside them is called **cell sap**. The green cell parts are (4).

They are tiny discs full of a green substance called **chlorophyll**. They trap the light energy that plants need for making food in a process called (5).



1. Do you know what
2. Can you tell me what
3. Please tell me what
4. Can you tell me what
5. Do you know what